






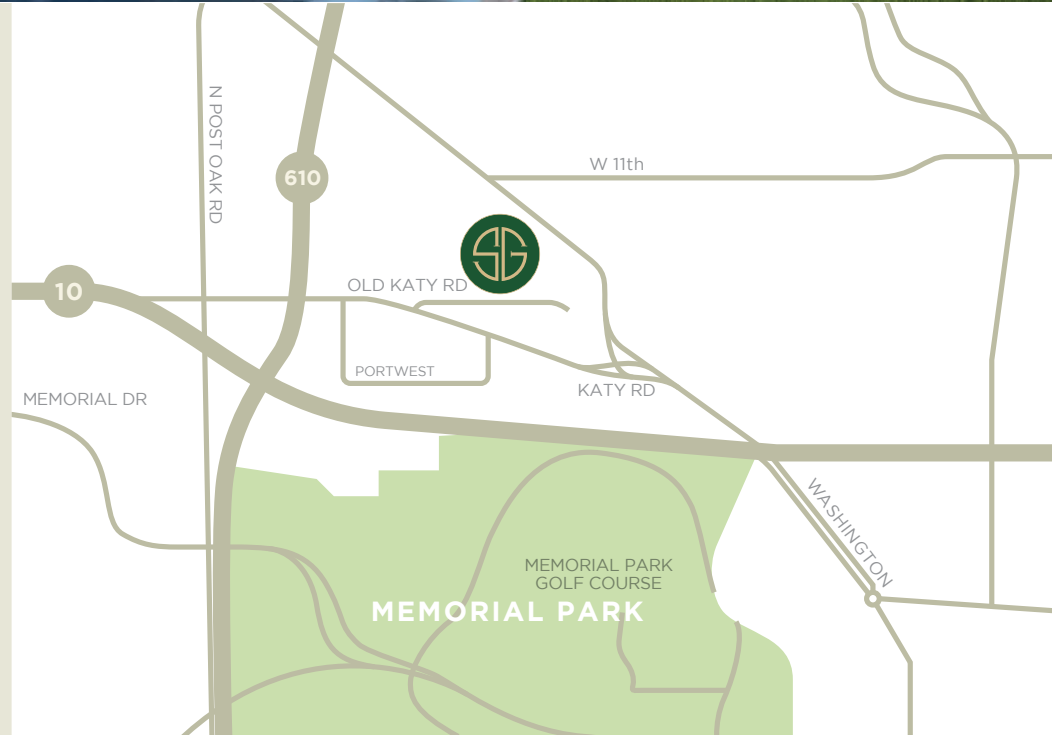
PELICAN BUILDERS
at
SOMERSET GREEN

INVERNESS Two-Story

FOR MORE INFO:
Stefan Stankovic
713.600.5097

HOMES BY PELICAN BUILDERS + 

exclusive sales + marketing by  Douglas Elliman 

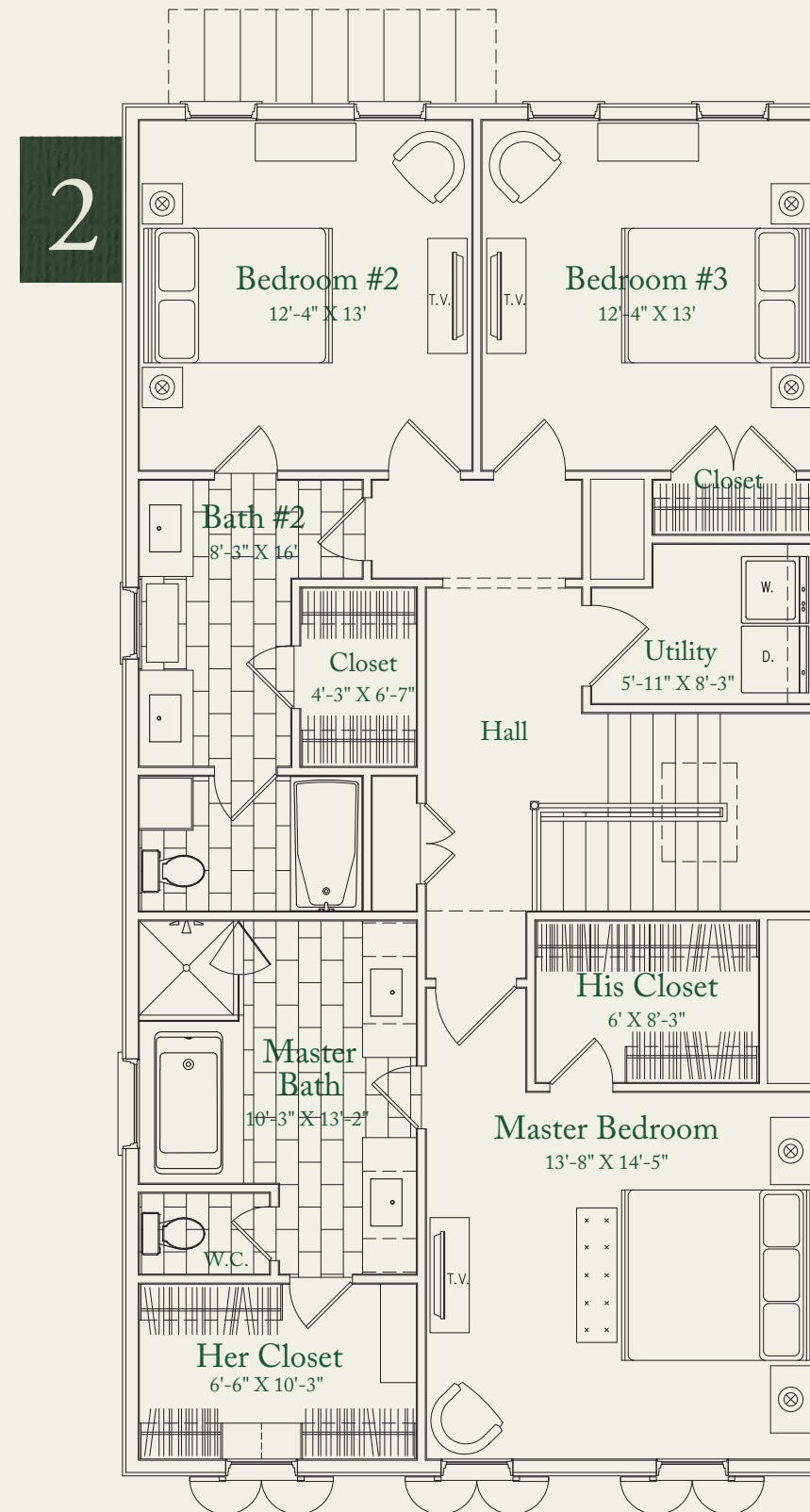
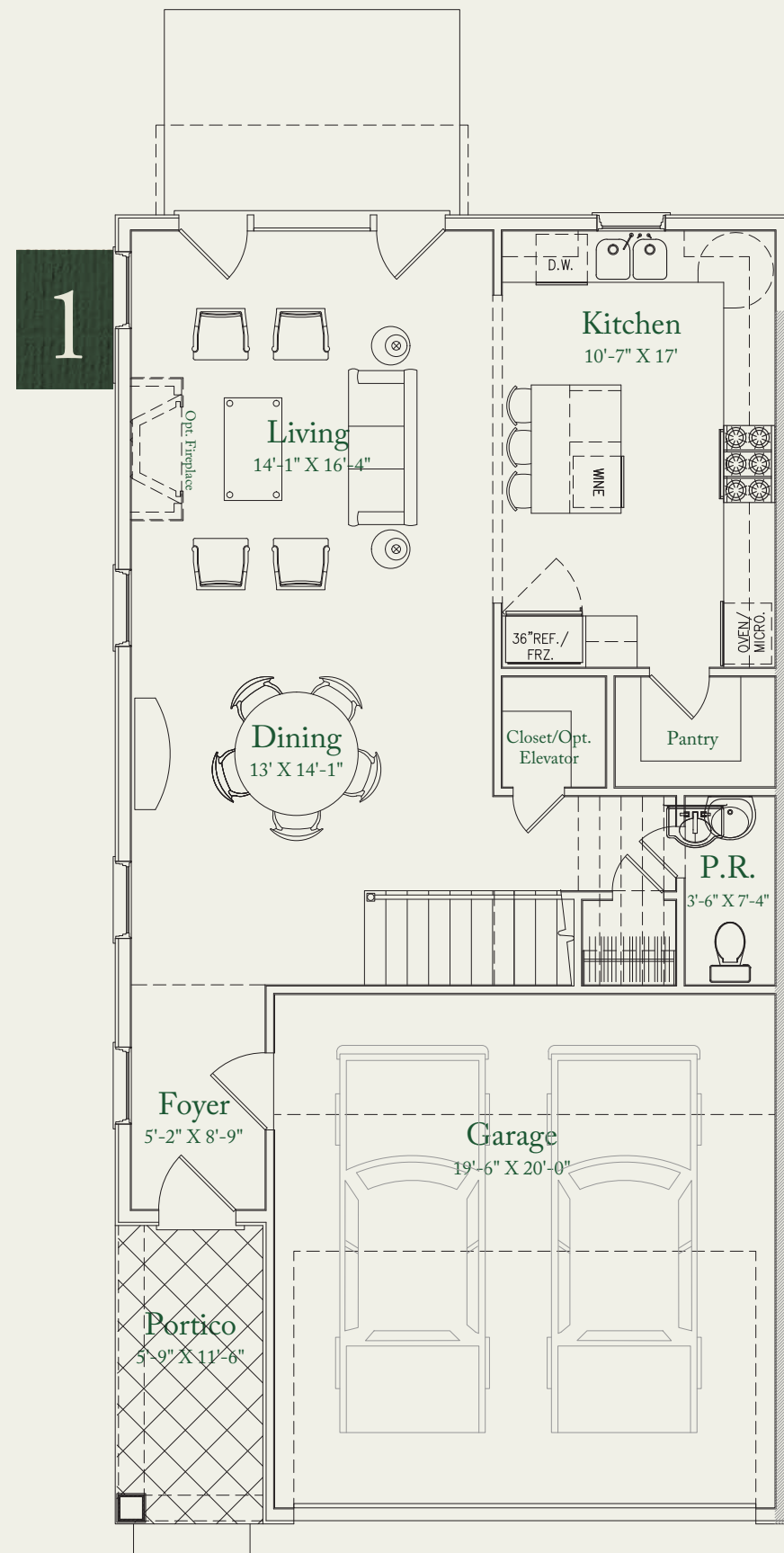


3 BEDROOM | 2 ½ BATH
2 STORY HOME | FIRST FLOOR LIVING | 2,170 SF

Somerset Green, arguably Houston's most innovative new Inner Loop community developed by Hines, is now a reality and will soon be the home to an audience looking for a new and exciting chapter in their lives. The community offers thoughtful planning on a large scale – featuring a sense of place, walkable streetscapes, water canals, pocket parks, a manned entry gate and affordability. Pelican Builders is pleased to offer home plans in this community. Signature features of the homes by Pelican will be uncompromising exterior architecture that adheres to the European Regency, Georgian and Normandy guidelines established by the developer. The floorplans will feature open living areas that are well programmed and appointed with tasteful finishes.

INVERNESS

Two-Story



3 BEDROOM | 2 ½ BATH | FIRST FLOOR LIVING | 2,170 SF

The features, dimensions and elevations shown on plans are subject to minor changes by builder. Front entry landing and cover depth vary from lot to lot. Within each plan type, minor changes in size and window configurations exist due to different elevation offerings and/or lot locations.