



PELICAN BUILDERS
at
SOMERSET GREEN



FOR MORE INFO:
Stefan Stankovic
713.600.5097

MEMORIAL PARK GOLF COURSE
MEMORIAL PARK

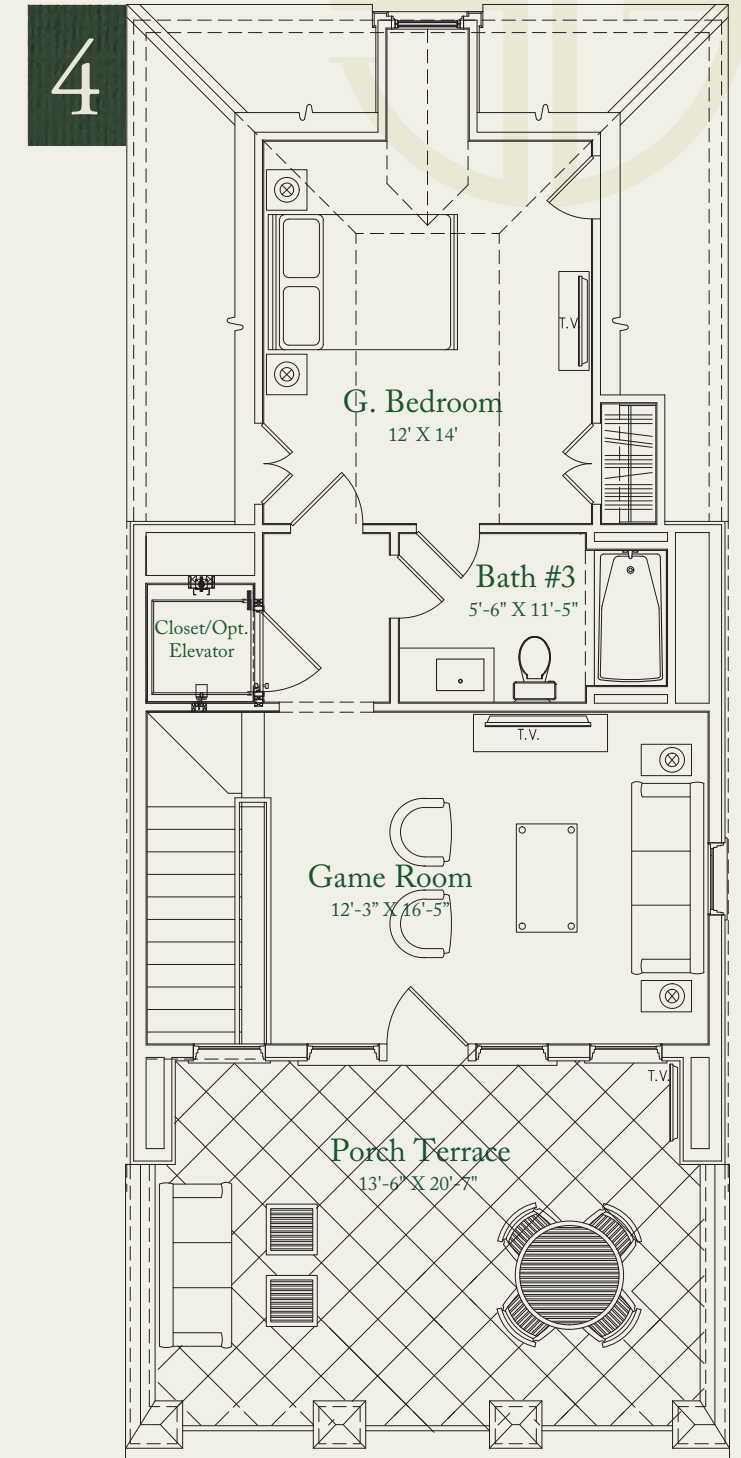
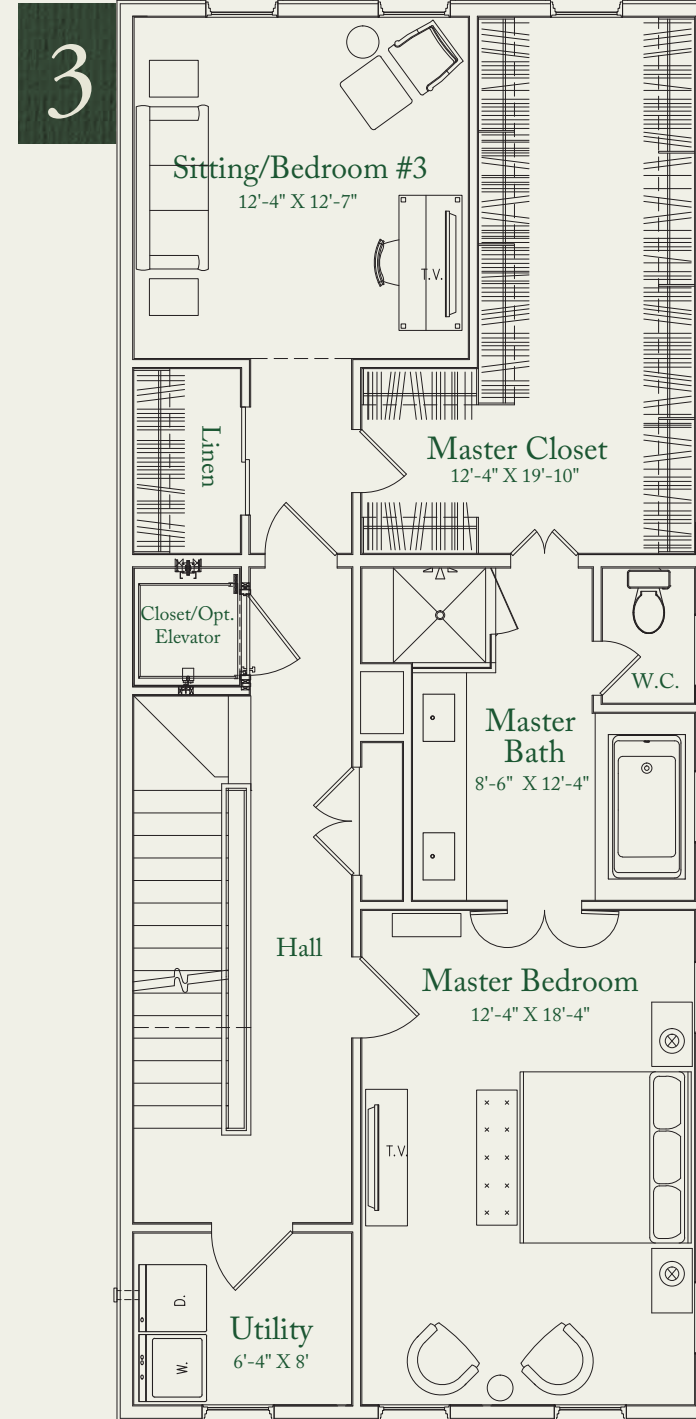
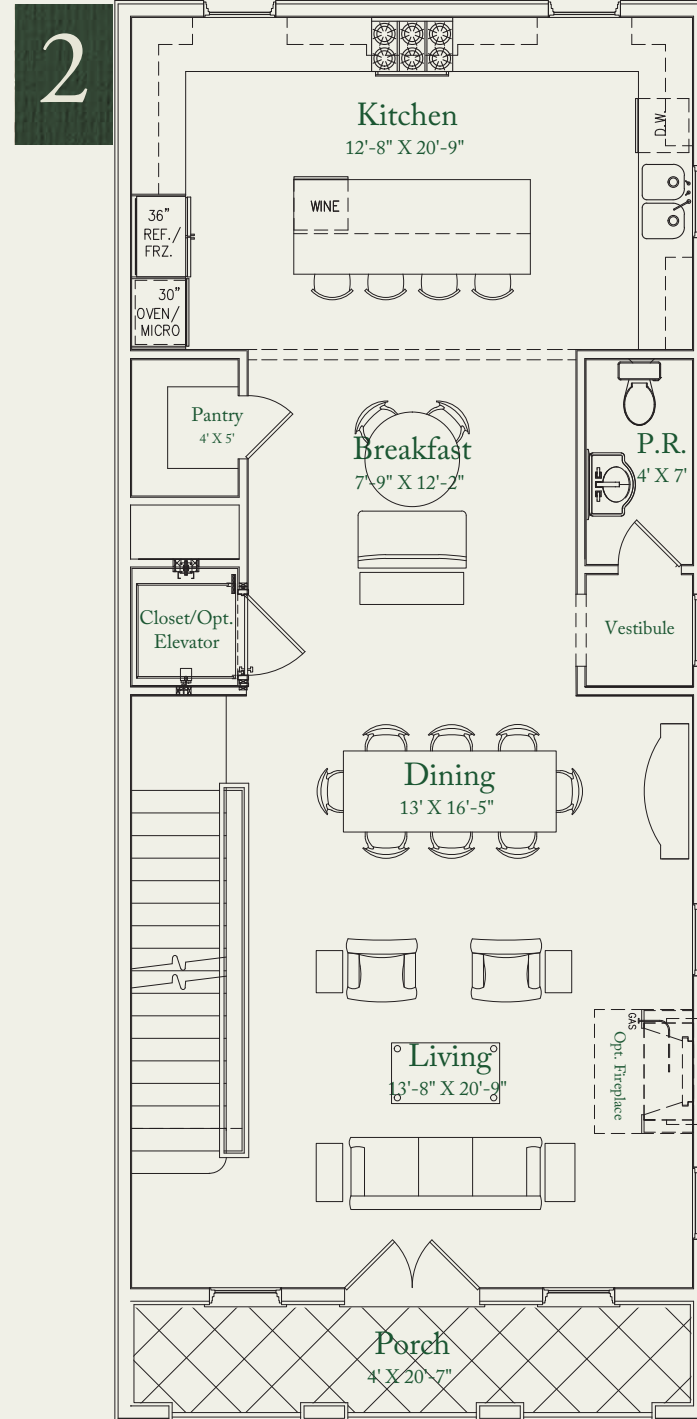
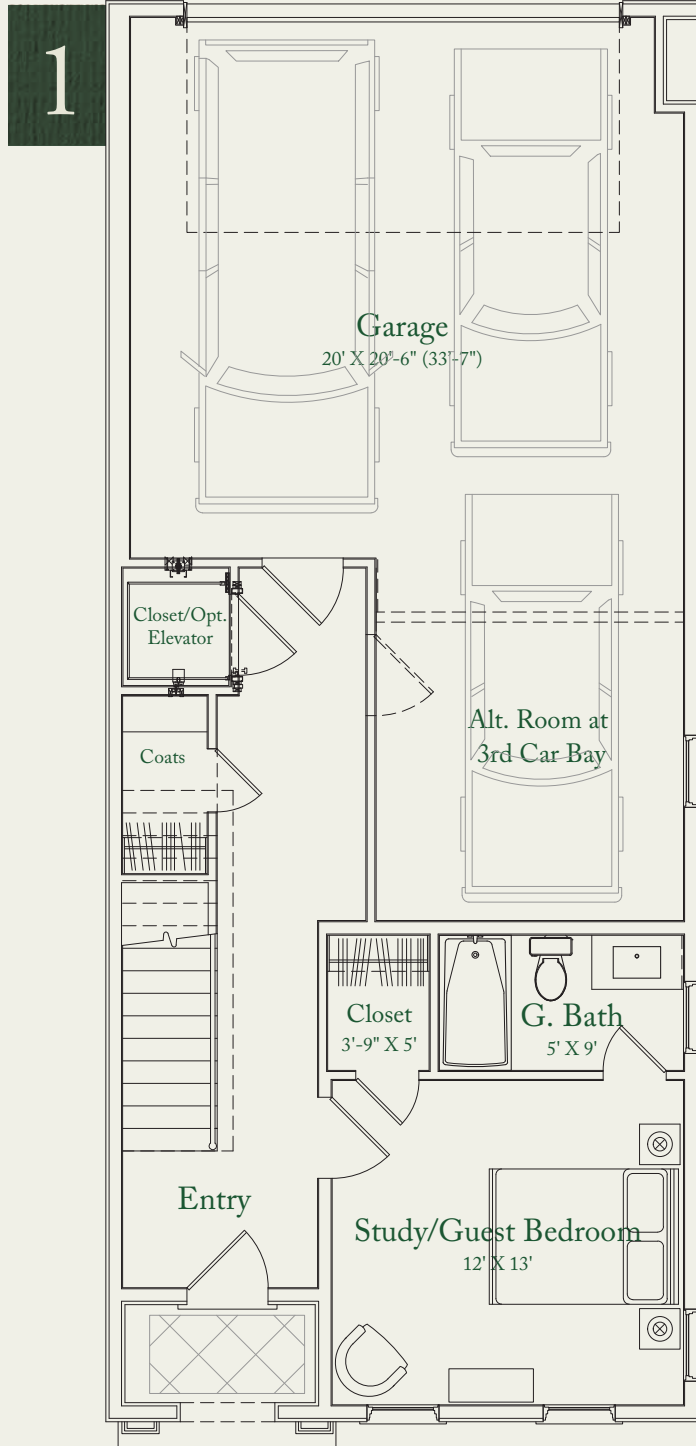
HOMES BY PELICAN BUILDERS + RANMAN

exclusive sales + marketing by Douglas Elliman

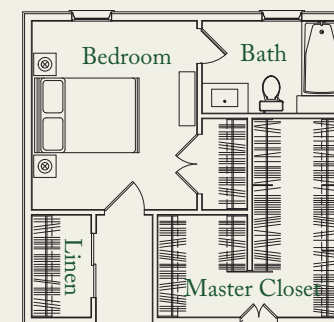


4 BEDROOM | 3 1/2 BATH | 3 CAR GARAGE | 4TH FLOOR MEDIA & TERRACE | 3,323 SF

Somerset Green, arguably Houston's most innovative new Inner Loop community developed by Hines, is now a reality and will soon be the home to an audience looking for a new and exciting chapter in their lives. The community offers thoughtful planning on a large scale – featuring a sense of place, walkable streetscapes, water canals, pocket parks, a manned entry gate and affordability. Pelican Builders is pleased to offer home plans in this community. Signature features of the homes by Pelican will be uncompromising exterior architecture that adheres to the European Regency, Georgian and Normandy guidelines established by the developer. The floorplans will feature open living areas that are well programmed and appointed with tasteful finishes.



Alternate 3rd Floor



The features, dimensions and elevations shown on plans are subject to minor changes by builder. Front entry landing and cover depth vary from lot to lot. Within each plan type, minor changes in size and window configurations exist due to different elevation offerings and/or lot locations.